

# For Lease

15318 N May Ave., Suite A., Edmond, OK 73013

## Class "A" Medical Office Space



### Property Description

**Property Address:** 15318 N May Ave., Suite A, Edmond, OK 73013

**Property Type:** Class "A" Medical Office Space

**Suite Size:** +/- 1635 sf

**Zoning:** O-2, PUD-1378

**Year Built:** 2011

**County:** Oklahoma

**Parking:** Asphalt Paved Parking

**Nearest Intersection:** N.W. 150th St., and North May Avenue

**Lease Price:** \$15.00/sf/year (NNN)

**NNN Expense Estimate:** \$4.00/sf/year

**Property Features:** Reception & Lobby, VCT flooring, (2) Operatory Rooms, Patient Intake Area, Consultation Office, (2) ADA Compliant Bathrooms, X-Ray Room potential, Lease includes phone system, lobby furniture and more.

### Area Description

Subject property is located in the prestigious Reserve on May Executive Office Park and approximately one-mile north of Kilpatrick Turnpike. Easy access to Hefner Parkway (HWY 74) and close proximity to retail shopping dining and related services.

### The Reserve on May Office Park Neighbors:

Boyce Bynum Pathology Laboratories, Laser Light Skin Clinic, Northwest Vision Source, Penterra Services, LPL Financial, Caplinger Mortgage Group.

Sources: Oklahoma County Assessor website and Property Owner



Presented By:

**Frank Miskovsky IV**

**Phone: (405) 590-2712**

**Email: [frank@OKCBroker.com](mailto:frank@OKCBroker.com)**



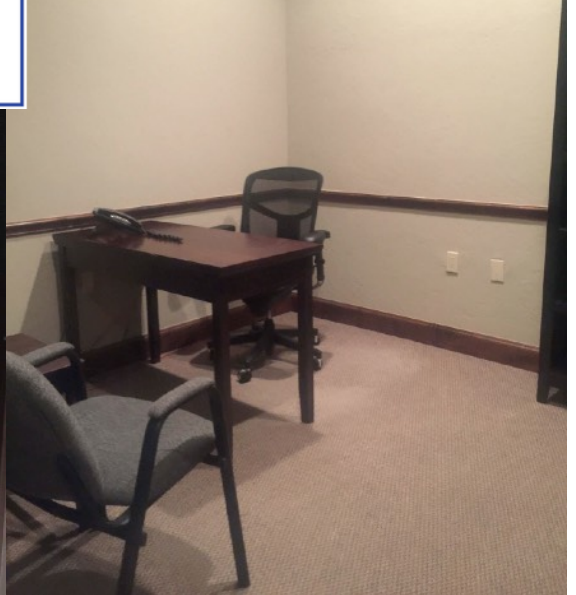
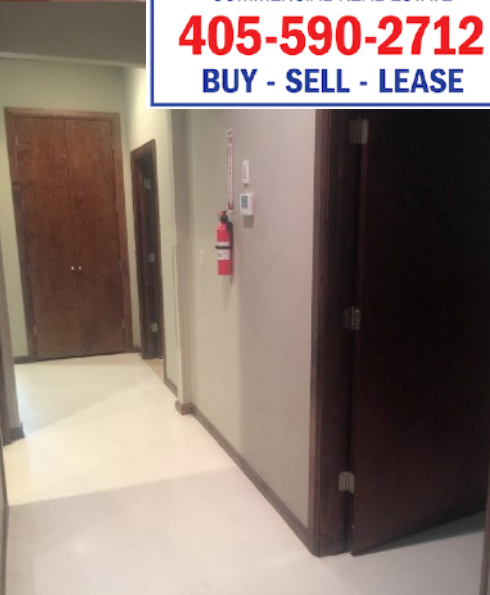
Disclaimer: All information obtained from sources deemed reliable but not guaranteed. All interested parties are encouraged to perform their own independent investigations and due diligence. Listing Broker is not responsible for errors, omissions, property condition or removal from market without notice.

# For Lease

15318 N May Ave., Suite A, Edmond, OK 73013



  
**OKCBroker.com**  
COMMERCIAL REAL ESTATE  
**405-590-2712**  
BUY - SELL - LEASE



Disclaimer: All information obtained from sources deemed reliable but not guaranteed. All interested parties are encouraged to perform their own independent investigations and due diligence. Listing Broker is not responsible for errors, omissions, property condition or removal from market without notice.